



# What's Up @ PYW?

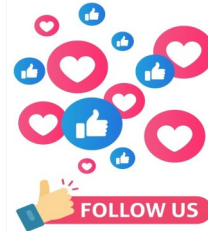
"Empowering youth in the Pittsfield area since 1986"

5 Park Street • P.O. Box 206 • Pittsfield, New Hampshire 03263

Call (603) 435-8272 • Text (603) 234-9788

Email [info@pittsfieldyouthworkshop.org](mailto:info@pittsfieldyouthworkshop.org)

Quarterly Newsletter of the Pittsfield Youth Workshop • Winter 24/25



## School Year Drop-in Hours:

Monday: 3:00pm-6:00pm  
Tuesday: 3:00pm-6:00pm  
Wednesday: 1:00pm-6:00pm  
Thursday: 3:00pm-6:00pm  
Friday: 3:00pm-6:00pm

Check the calendar as hours might change due to special events!

## Upcoming High School Only Nights:

Fri, 1/3 and 2/7  
6:00pm-8:00pm

## Other Important Dates to Remember:

More info for trips will be available soon! Permission slips are required and will be available for pickup at PYW!

Sat, 12/7: Tree Lighting!  
Gingerbread House Raffle  
4:00pm-6:00pm

Mon, 12/9 - Fri, 12/13:  
Decorate and fill Meals on  
Wheels bags  
(earn Service Learning Hours)

Fri, 12/20: PYW Holiday  
Celebration

Mon, 12/23 - Wed 1/1: PYW  
Closed for Holiday Vacation

Mon, 1/20:  
NO SCHOOL/NO DROP IN  
Mall Trip  
11:00am-4:00pm

## February Vacation Week

Mon, 2/24:  
Drop-in 2:00pm-6:00pm

Tues, 2/25:  
Trip Day  
Movie at Smitty's in Tilton

Wed, 2/26:  
Drop-in 2:00pm-6:00pm

Thurs, 2/27:  
Trip Day  
Snow Tubing  
Location TBD

Fri, 2/28:  
NO DROP IN, PYW CLOSED



To everyone who visited the Haunted Hospital at PYW during Trick or Treat... thank you! We appreciate your support!

# PYW Winter 24/25

Sunday	Monday	Tuesday	Wednesday	Thursday	Friday	Saturday
<u>Dec. 1</u>	2 Drop-in 3:00-6:00 <i>Decorate for the Holidays</i> Mitten Garland	3 Drop-in 3:00-6:00 <b>Scattergories</b>	4 Drop-in 1:00-6:00 <b>Gingerbread Houses: BAKE</b>	5 Drop-in 3:00-6:00 <b>Gingerbread Houses: BUILD</b>	6 Drop-in 3:00-6:00 <b>Gingerbread Houses: DECORATE</b>	7 Tree Lighting 4:00-6:00
8	9 Drop-in 3:00-6:00 Apples to Apples <b>MOW Bags: Decorate</b>	10 Drop-in 3:00-6:00 Zentangles Day 1 <b>MOW Bags: Decorate</b>	11 Drop-in 1:00-6:00 Zentangles Day 2 <b>MOW Bags: Decorate</b>	12 Drop-in 3:00-6:00 Crossword Puzzles <b>MOW Bags: Decorate</b>	13 Drop-in 3:00-6:00 Bingo <b>MOW Bags: Decorate</b>	14
15	16 Drop-in 3:00-6:00 <b>Trading Card Games</b>	17 Drop-in 3:00-6:00 Wooden Snowmen Day 1	18 Drop-in 1:00-6:00 Wooden Snowmen Day 2	19 Drop-in 3:00-6:00 PYW Family Feud: Holiday Edition	20 Drop-in 3:00-6:00 <b>Holiday Celebration!!</b>	21
22	23 <i>PYW Closed</i>	24 <i>PYW Closed</i>	25 <i>PYW Closed</i> Happy Holidays!	26 <i>PYW Closed</i>	27 <i>PYW Closed</i>	28 
29	30 <i>PYW Closed</i>	31 <i>PYW Closed</i>	<u>January 1</u> <i>PYW Closed</i> Happy New Year!	2 Drop-in 3:00-6:00 <b>WILD CARD DAY &amp; Holiday Clean-up</b>	3 Drop-in 3:00-6:00 Mafia & <u>High School Only: 6:00-8:00</u>	4
5 	6 Drop-in 3:00-6:00 <b>Rolled Magazine Art Day 1</b>	7 Drop-in 3:00-6:00 <b>Rolled Magazine Art Day 2</b>	8 Drop-in 1:00-6:00 <b>COOKING CLUB</b>	9 Drop-in 3:00-6:00 International Choreographer's Day: <b>Just Dance!</b>	10 Drop-in 3:00-6:00 Pillow Making Day 1	11
12	13 Drop-in 3:00-6:00 Pillow Making Day 2	14 Drop-in 3:00-6:00 Brain Teasers & Snap Circuits	15 Drop-in 1:00-6:00 <b>COOKING CLUB</b>	16 Drop-in 3:00-6:00 Paracord Keychains	17 Drop-in 3:00-6:00 Chapstick Making	18
19	20 <u>No School/Drop-in</u> <b>Mall Trip 11:00-4:00</b>	21 Drop-in 3:00-6:00 Chess & Checkers	22 Drop-in 1:00-6:00 <b>COOKING CLUB</b>	23 Drop-in 3:00-6:00 <b>Dream Catchers Day 1</b>	24 Drop-in 3:00-6:00 <b>Dream Catchers Day 2</b>	25 
26	27 Drop-in 3:00-6:00 <b>Trading Card Games</b>	28 Drop-in 3:00-6:00 Glass Painting	29 Drop-in 1:00-6:00 <b>COOKING CLUB</b>	30 Drop-in 3:00-6:00 Codenames	31 Drop-in 3:00-6:00 Jeopardy	<u>Feb. 1</u>
2 	3 Drop-in 3:00-6:00 Team Challenge Day	4 Drop-in 3:00-6:00 Relaxation Jars	5 Drop-in 1:00-6:00 Photo Mashups Day 1	6 Drop-in 3:00-6:00 <b>WILD CARD DAY &amp; Photo Mashups Day 2</b>	7 Drop-in 3:00-6:00 Tie Dye Shirts <u>High School Only: 6:00-8:00</u>	8
9	10 Drop-in 3:00-6:00 Cleaning Day at PYW... ...and eat cake after!	11 Drop-in 3:00-6:00 Homemade Play Dough	12 Drop-in 1:00-6:00 Candle Making	13 Drop-in 3:00-6:00 Homemade Chocolates	14 Drop-in 3:00-6:00  Wii Sports	15
16	17 Drop-in 3:00-6:00 <b>Trading Card Games</b>	18 Drop-in 3:00-6:00 Guided Painting	19 Drop-in 1:00-6:00 "Send Your Best" Challenge	20 Drop-in 3:00-6:00 <b>Button Making Day 1</b>	21 Drop-in 3:00-6:00 <b>Button Making Day 2</b>	22
23 February Vacation Week	24 Drop-in 2:00-6:00 PYW Escape Room	25 <u>No Drop-in</u> <b>Trip: Movie (Smitty's in Tilton time TBD)</b>	26 Drop-in 2:00-6:00 <b>Pajama Day!</b> Pictionary & Hot Chocolate Bar	27 <u>No Drop-in</u> <b>Trip: Snow Tubing (Location and time TBD)</b>	28 <i>PYW Closed</i>	<u>March 1</u>



**United  
Way**



The Pittsfield Youth Workshop is proud to be a partner agency of the Granite United Way.

PYW is funded in part by The Globe Community Fund, Glahn Family Fund, Anchorage Fund, Capital Region Community Fund, Carl Wallman Fund, Coit House Fund, Delphinium Fund, Respect for All Youth Fund, Leslie S. and Lola M. Hubbard Fund, New Hampshire Charitable Foundation Fund, Phil and Suzie Butler Charitable Fund, and The Rolfe and Rumford Donor Advised Fund of the New Hampshire Charitable Foundation; Granite United Way; The Foss Family Foundation; The Sanderson Trust; Greater Lakes Region Children's Auction; Town Fair Tire Foundation, Merrimack County Savings Bank Foundation, and the Agnes Lyndsay Trust.

Support is also provided by donations, fundraising and generous volunteers. If you are interested in supporting our organization, please visit us at:

[www.PittsfieldYouthWorkshop.org](http://www.PittsfieldYouthWorkshop.org)



**PYW YOUTH  
SPOTLIGHT:  
Meet Kailani  
Age 11**

**Nickname:** Kai

**How long have you been coming to PYW?**  
"Since September of 2024"

**What made you start coming to PYW?**  
"I am homeschooled and I wanted to meet more kids my age! I am lucky that PYW is close to the town that I live in!"

**What do you like about PYW?**  
"I like the activities, especially learning new things-like when Ben taught me how to play Pokémon. I love talking with Zach, Ashley, and the kids who come here. I have made lots of friends!"

**What's your favorite PYW memory so far?**  
"Apple picking! The apples were so good! I had a lot of fun with my friends and we got to make caramel apples with Ashley after! Painting the directional sign post with my friends and putting it together was really fun, too!"

**What is your favorite thing to do at PYW?**  
"I like when my closest friends are here-we have lots of fun making hopscotches and just hanging out outside."

**What do you want to see happen at PYW in the future?**  
"I hope that kids like me who are homeschooled and maybe don't live in Pittsfield learn about PYW and start going and make the PYW community even bigger!"



**Board of Directors:**

Steve Perras, President

Tina Metcalf, Vice President and Secretary

Andi Riel, Treasurer

Rick Walter

Lee Shafer

Mike Wolfe

Vacancy: This could be you!

**PYW Staff:**

Zach Powers, Executive Director

[zachpowers@pittsfieldyouthworkshop.org](mailto:zachpowers@pittsfieldyouthworkshop.org)

Ashley Perron, Program Director

[ashley@pittsfieldyouthworkshop.org](mailto:ashley@pittsfieldyouthworkshop.org)

Vacancy: Part-time Program Assistant